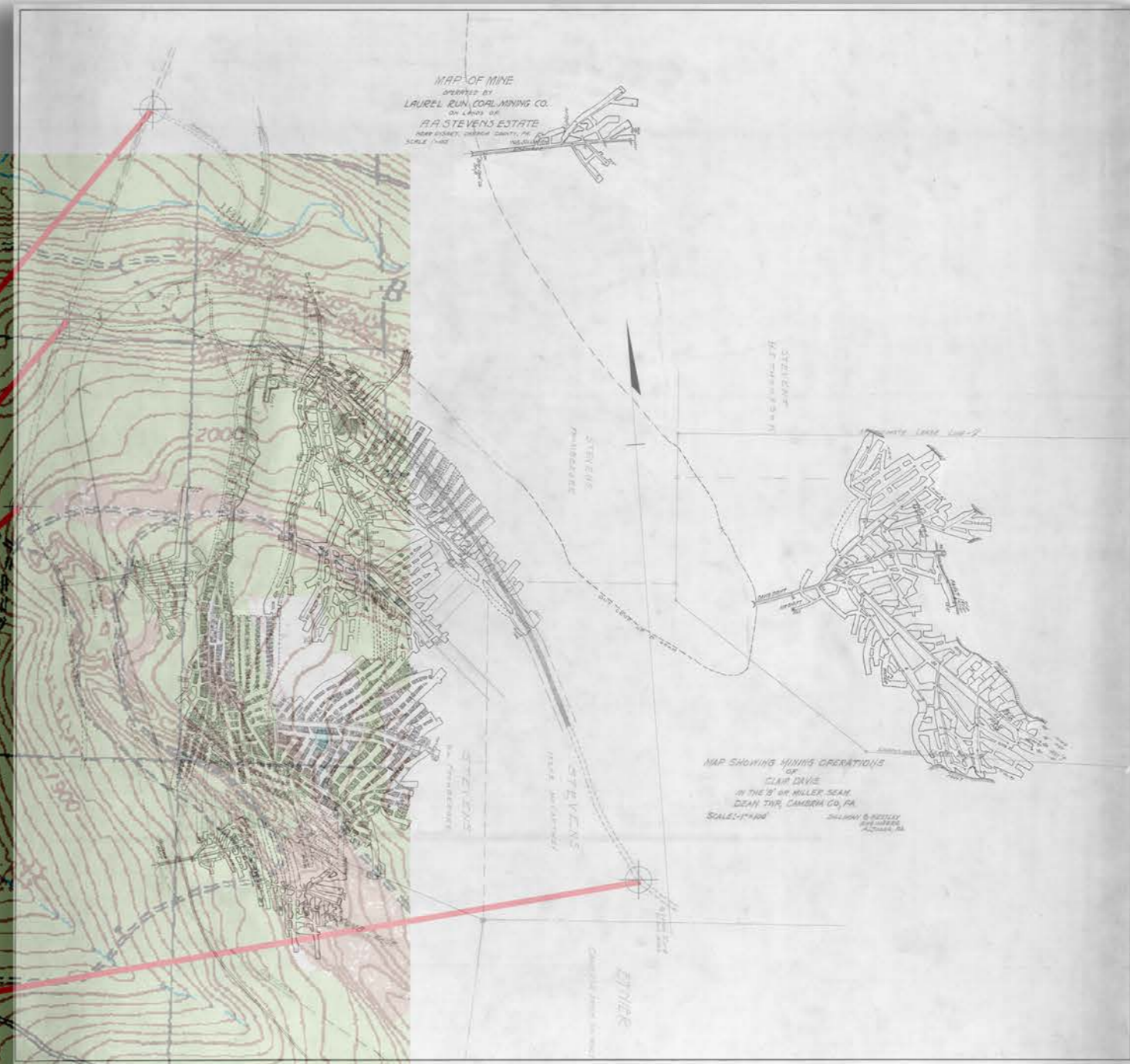
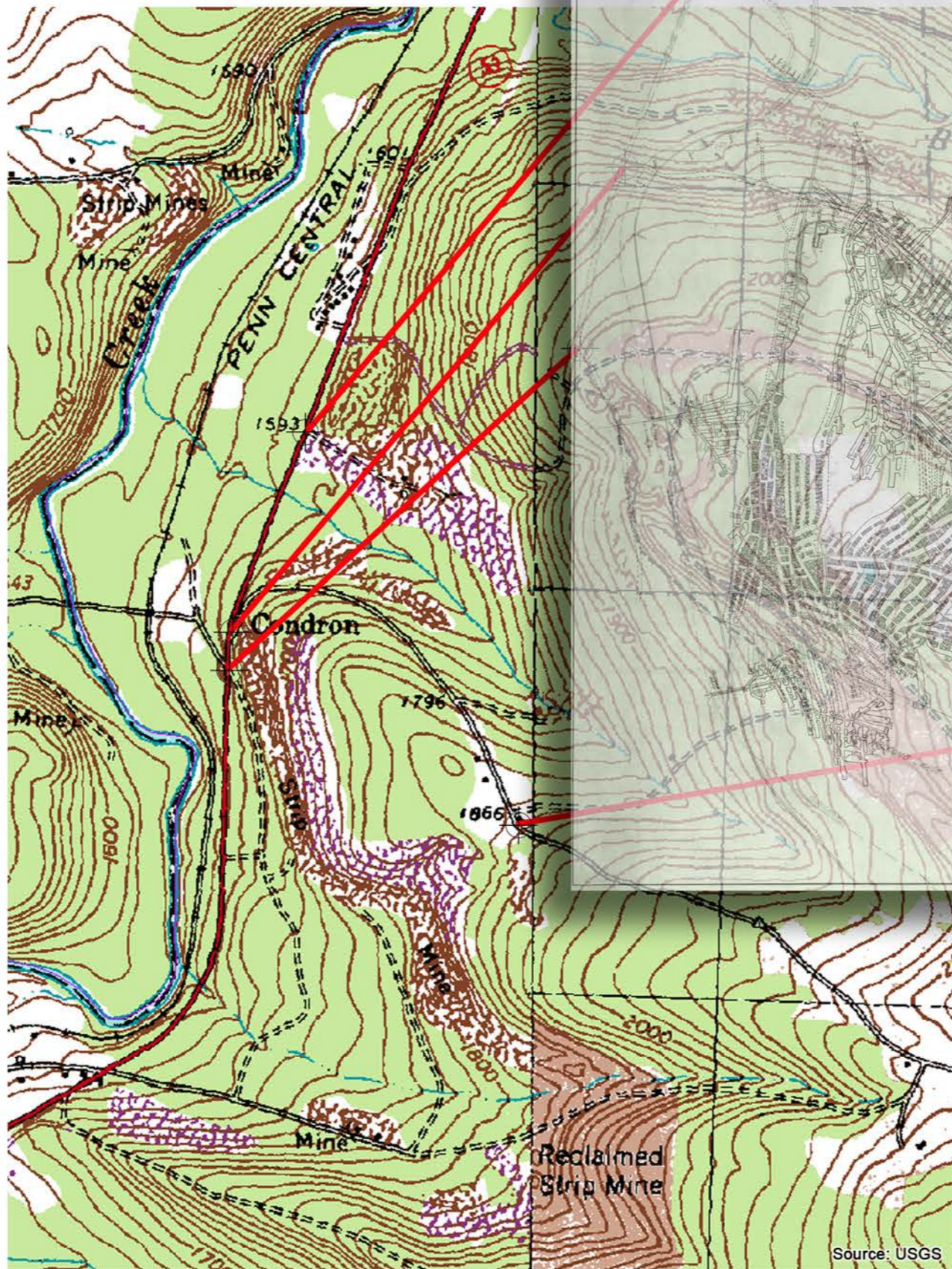


# Multiple Basemap, Feature, & Imagery Sources Required for Georeferencing



Source: PAMAP

LIDAR is Necessary for Identification of Mine Entrances for Georeferencing Control Points.

P.R.R. Used as Verification Feature



Historical Maps Used to Confirm Existence & Location of P.R.R.

Source: PA DOT

Less Precise Control Points (such as this bend in the road) Necessary for Proper Orientation and Stretching as Others are Highly Collinear

- Control Points
- Georeference Connections
- Verification Features